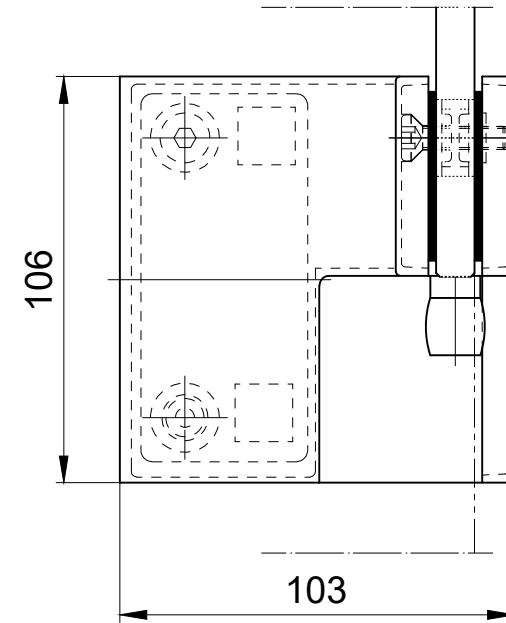
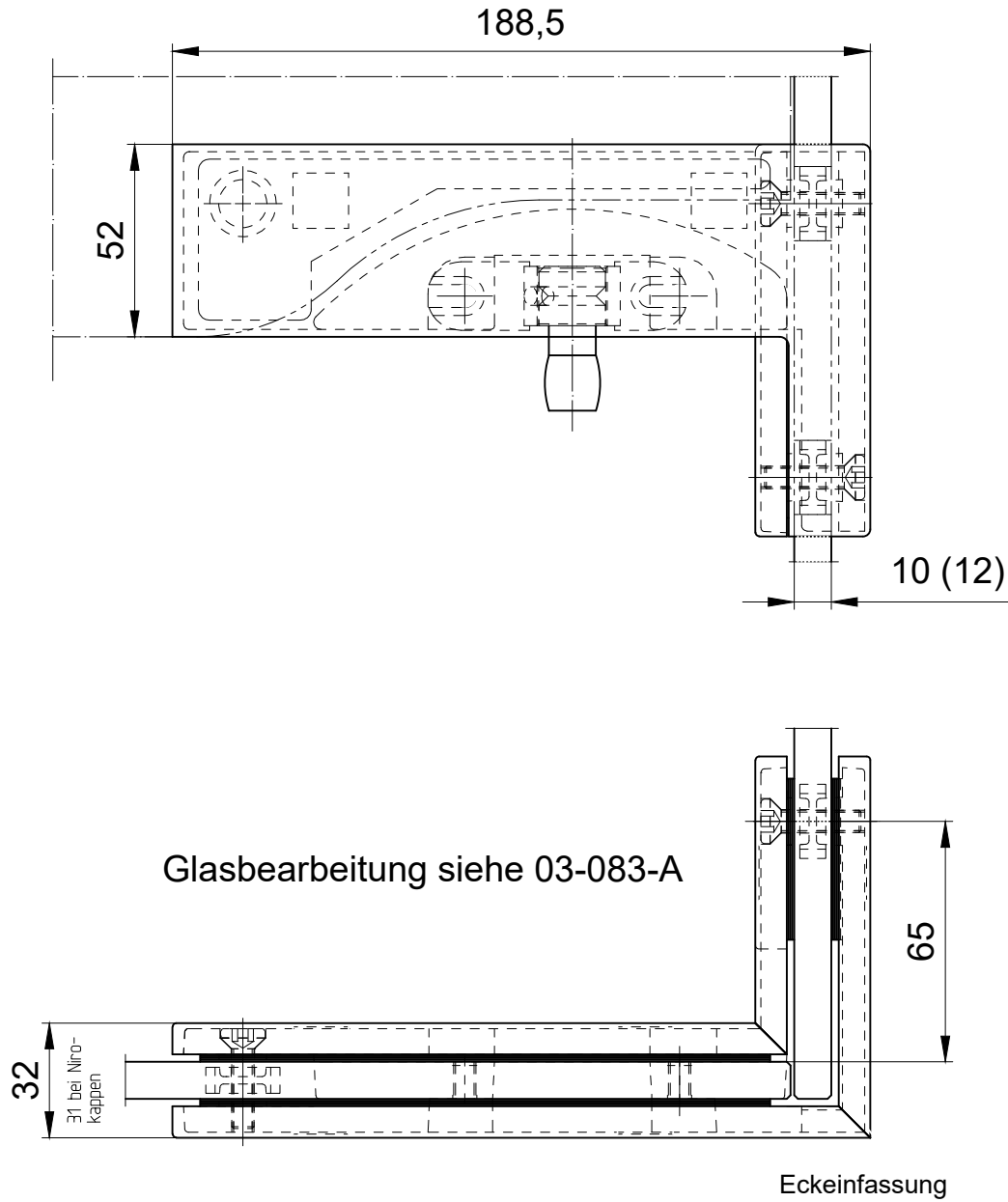


1:2

11.2020 / 014628

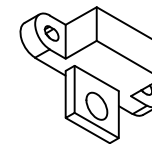


Eckverbindung (PT 42) 90°

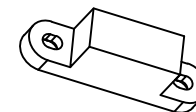
Art.-Nr. 03.165 - 90° rechts (wie Abbildung)

Art.-Nr. 03.164 - 90° links (s. 03-080)

weitere Optionen
als Sonderanwendung:



Anschlageneinsatz



Blindeinsatz erst
ab 105° möglich

03-083